

I'll Go Where You Want Me to Go

Mary Brown/Carrie E. Rousenfell
arr. Nathan Howe

Moderate lilt (♩. = c. 44)

rall.

a tempo

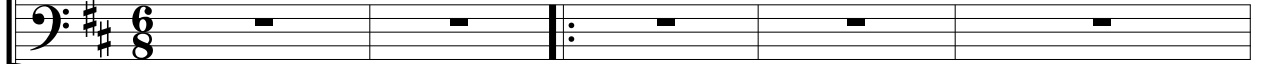
Treble voices



mp

It may not be on the
Per - haps to - day there are

Baritone voices

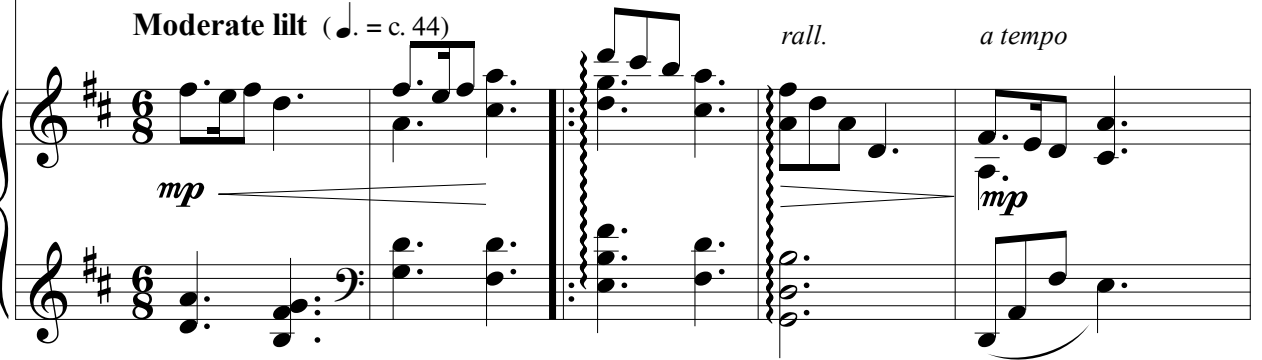


Moderate lilt (♩. = c. 44)

rall.

a tempo

Piano



mp

mp

6



moun - tain height Or o - ver the stor - my sea, _____
lo - ving words which Je - sus would have me speak; _____



mp

It may not be at the bat - tle's front My
There may be now in the paths of sin Some



© 2016 Nathan Howe NathanHoweMusic.com

This score may be copied for noncommercial church and home use. Recording or performance for profit requires permission. If you enjoy this music, please support it through a purchase or donation.

I'll Go Where You Want Me to Go

11

mf But if by a still, — small voice he calls To
O Sav - ior, if thou — wilt be my guide, Tho

Lord will have need of me.
wan - d'rer whom I should seek. *mf*

mf

15

cresc.

paths that I do — not know, I'll an - swer, dear Lord. with my hand — in thine: I'll
dark — and rug - ged the way, My voice — shall ech - o the mes - sage sweet: I'll

cresc.

cresc.

19

go where you want me to go. _____ *f* I'll
say what you want me to say. _____

f I'll go where you want me to

23

go where you want me to go, O-ver mou-tain or plain or sea; I'll say what you want me to
go, dear Lord, O-ver moun-tain or plain — or sea;

I'll Go Where You Want Me to Go

rall.

27

say, dear Lord; I'll be what you want me to be. _____

This system contains the first two staves of music. The top staff is a vocal line in treble clef with a key signature of one sharp (F#) and a common time signature. The bottom staff is a piano accompaniment in bass clef with the same key signature and time signature. The lyrics are written below the vocal line.

mp

rall.

This system contains the piano accompaniment for the second system. It features a treble clef staff and a bass clef staff. The music includes dynamic markings for *mp* and *rall.*

Grandly (♩. = c. 38)

32

f

There's sure - ly some - where a low - ly place In earth's har-vest fields so

f

This system contains the third and fourth staves of music. The top staff is a vocal line in treble clef with a key signature of one sharp (F#) and a common time signature. The bottom staff is a piano accompaniment in bass clef with the same key signature and time signature. The lyrics are written below the vocal line. Dynamic markings for *f* are present.

Grandly (♩. = c. 38)

f

This system contains the piano accompaniment for the fourth system. It features a treble clef staff and a bass clef staff. The music includes dynamic markings for *f*.

36

wide _____ Where I may la - bor through life's short day For Je - sus, the Cru - ci - fied. So

This block contains the vocal and bass lines for measures 36 through 40. The vocal line is in a soprano clef with a key signature of one flat (B-flat). The lyrics are: "wide _____ Where I may la - bor through life's short day For Je - sus, the Cru - ci - fied. So". The bass line is in a bass clef with the same key signature. The music is in a 4/4 time signature.

This block contains the piano accompaniment for measures 36 through 40. It features a right-hand part with chords and a left-hand part with a steady eighth-note bass line. The key signature is one flat (B-flat) and the time signature is 4/4.

41

trust - ing my all to thy ten - der care, And know - ing thou lo - vest me, I'll

This block contains the vocal and bass lines for measures 41 through 45. The vocal line is in a soprano clef with a key signature of one flat (B-flat). The lyrics are: "trust - ing my all to thy ten - der care, And know - ing thou lo - vest me, I'll". The bass line is in a bass clef with the same key signature. The music is in a 4/4 time signature.

This block contains the piano accompaniment for measures 41 through 45. It features a right-hand part with chords and a left-hand part with a steady eighth-note bass line. The key signature is one flat (B-flat) and the time signature is 4/4.

I'll Go Where You Want Me to Go

45

do ___ thy will with a heart sin-cere: I'll be what you want me to be. ___

mf I'll

50

cresc. poco a poco

mf I'll go where you want me to go, O-ver mou-tain or plain or sea; I'll

cresc. poco a poco

go where you want me to go, dear Lord, O-ver moun-tain or plain or sea;

mf cresc. poco a poco

I'll Go Where You Want Me to Go

54 *cresc.* *f* *dim.* *mp*

say what you want me to say, dear Lord; I'll be what you want me to be. _____ I'll

cresc. *f* *dim.* *mp*

59 *molto rall.*

be _____ what you want me _____ to be. _____

mp *molto rall.*